

ECE-TRIS: ONLINE PERSONNEL ACCOUNT

ECE-TRIS ARTICLE FOR ECE PROFESSIONALS



New accounts are to be requested online. This new feature will step users through account set-up and make them aware if they may already have an existing ECE-TRIS account.

- Go to ECE-TRIS Website <https://ece.trc.ky.gov>



NEW ACCOUNT REQUEST

New to ECE-TRIS? Sign up here for an account.

[Request Account](#)

- Click on Create ECE Account

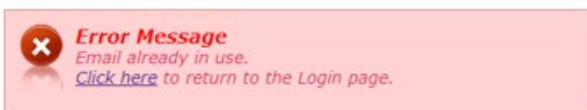
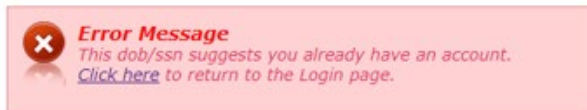
Kentucky Early Childhood Professional Account

This account will initiate the tracking of your professional development, certifications, and education records. It will also provide access to online training hosted on ECE-TRIS such as Pediatric Abusive Head Trauma.

[Create ECE Account](#)

- ENTER DETAILS ON FORM – In Employer Area, provide the name of the school, specific childcare program, along with the address. Please do not give the school system or main agency.**

If you receive either of the following errors, return to login page because you likely already have an account. There are options on the login page to help retrieve/reset your account information.



You will receive the following message if your account request was successful.

ECE-TRIS Account Membership Form

Your request for a new user account is under review by ECE-TRIS staff. You will receive an email with your sign-in information once your account has been verified.

You should receive an email reply within 3-5 business days (M-F)

ECE-TRIS!
Growing Professionals, Growing Kids
<https://ece.trc.ky.gov>